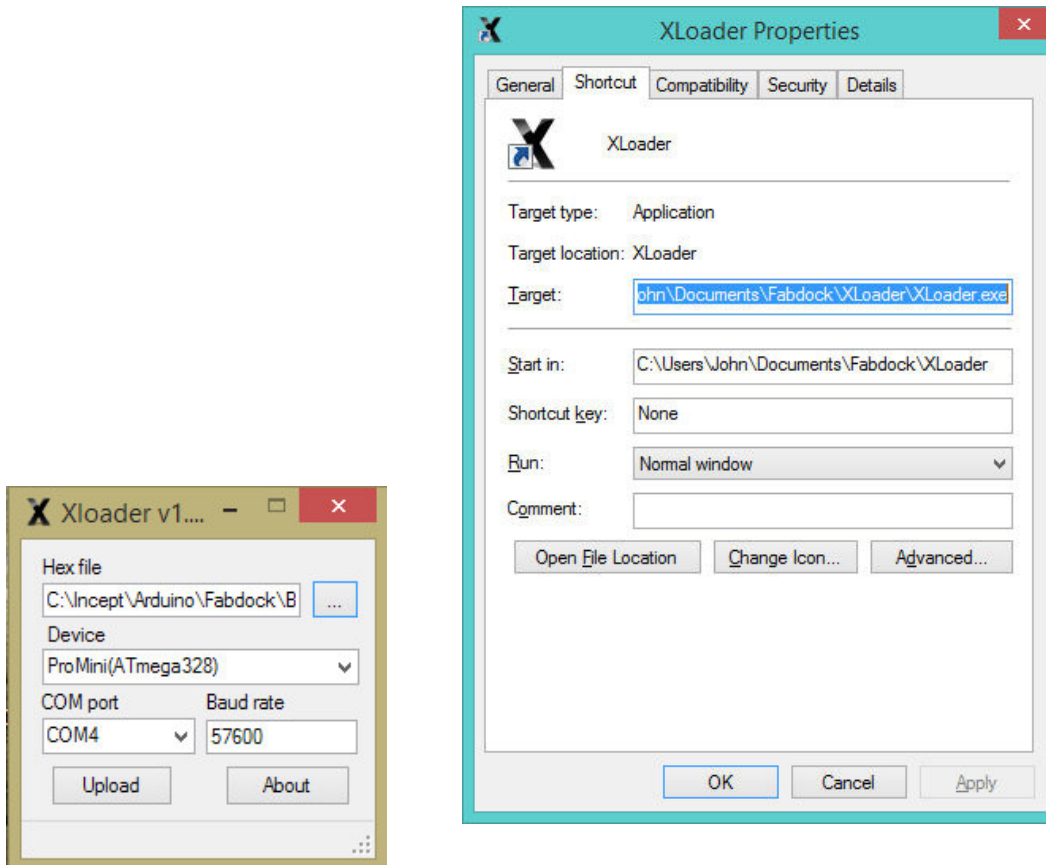


X-Loader for FAB Dock [230V controllers]

Notes by John Booth 2021.

XLoader is a very small binary-file uploading utility for Fabdock microcontroller devices. It does not need to be installed into the Windows environment and can be executed directly from any location.

- Create a <Fabdock> folder in your laptop computer, in Documents.
- Unpack and Copy the whole XLoader folder from the <xloader.zip> file into that location Documents/Fabdock/.
- Create a shortcut on your Windows desktop to <XLoader.exe>.



- Install the CH340 interface port driver. Click on <[CH34x_Install_Windows_v3_4.exe](#)> and follow the prompts.
- You will need a standard USB printer cable. If you have USB-C ports you may need an adapter for USB.
- Switch off the FAB Dock controller at the mains.
- Plug in the USB printer cable to any USB port on your computer. Plug the other end into the USB port in the FAB Dock controller.
- Open XLoader.
- In the top drop-down field "Hex file" choose the file <[FD_dockside_645-6_230v.ino.hex](#)>.
- In the second drop-down choose "Mega(ATMEGA2560)".
- In the third drop-down select the COM port which shows up. This might be COM3 etc. If no COM port shows then the CH340 driver is either not installed or is an incompatible version.
- Click on <Upload> and wait until the message "xxxx bytes uploaded" is returned.
- Remove interface, upload completed.